

Safeguards implementation under Pandemic in ROK

Dec. 15

Na Young Lee

Korea Institute of Nuclear Nonproliferation and Control

Outline

Background

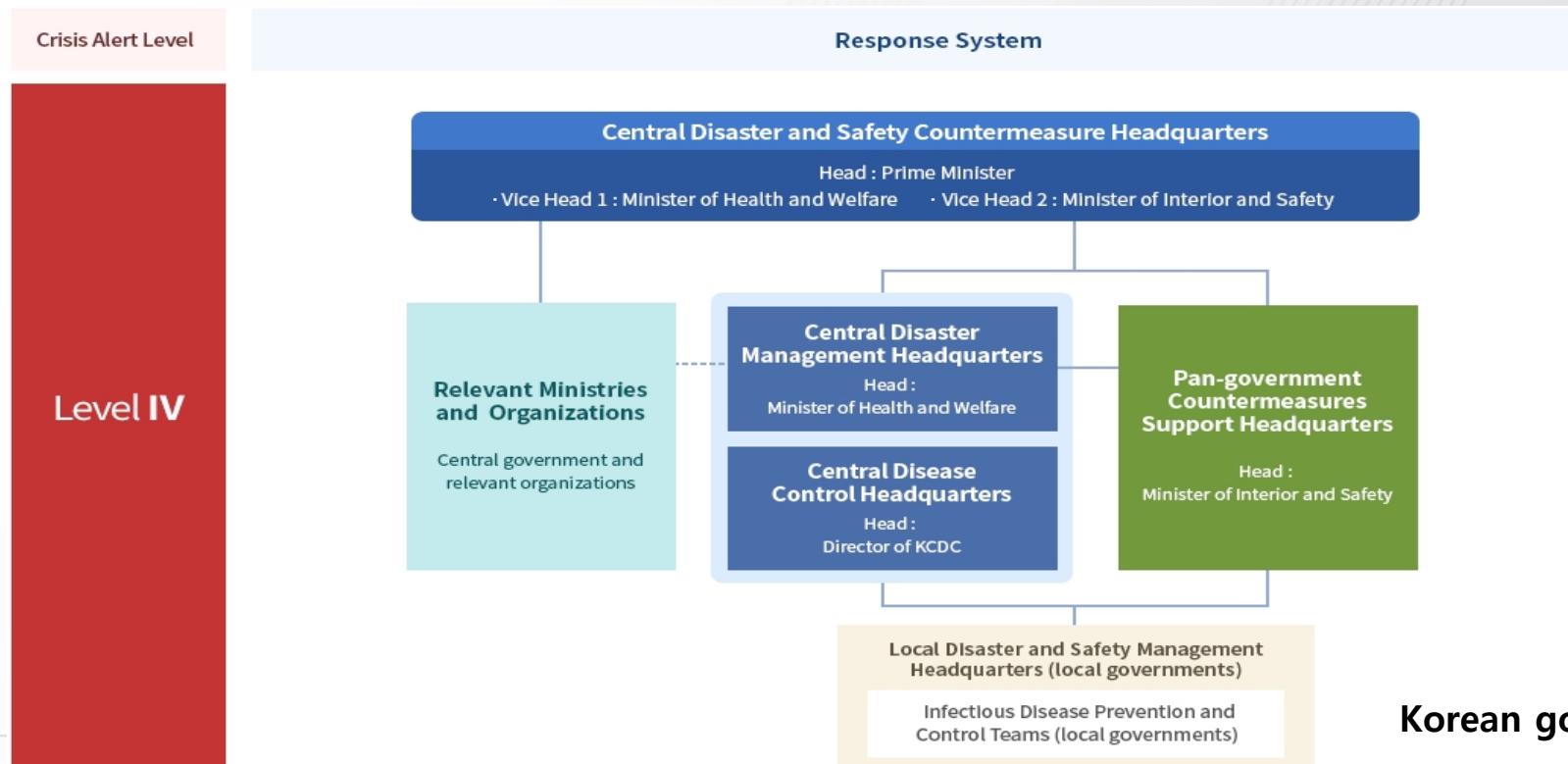
Impact on the regulatory activities in ROK

Lessons learned

Summary



- ▶ Declared COVID-19 a 'pandemic' on March 11, 2020.
- ▶ KDCA established new orders against COVID-19
 - ▶ KDCA: Korea Disease Control and Prevention Agency



➤ Domestic inspection

- Basically NSSC(Nuclear Safety and Security Commission) and NPP facility operators followed the rule by the KDCA + α (manual of each facility)
- Flexible implementation of the national inspection (Number of inspectors and period of inspection)

➤ Mandatory education and training for the facility staffs continued

- Training with smaller numbers at a time to follow the national guidelines (Social distancing level)

▶ Entry

- ▶ Authorization (A2 Visa) when the IAEA inspectors enter the ROK
- ▶ Exemption from quarantine in case of test negative
- ▶ Subject to active monitoring for 14 days through "Self-Diagnosis App" of the Ministry of Health and Welfare

▶ Provide information package since Feb.2020

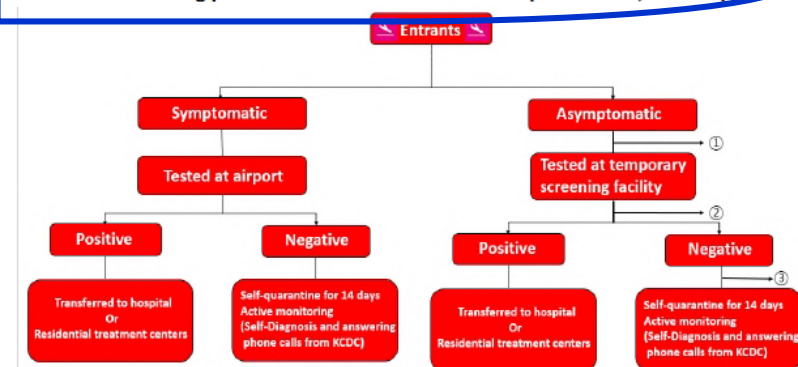
- ▶ To inform the IAEA inspectors the national quarantine policy

☞ **Special Entry Procedure** ; all inbound travelers(Korean and foreign nationals) receive temperature screening and fill out the Health Questionnaire and Special Quarantine Declaration in accordance with the Special Entry Procedure. All travelers are allowed to enter the nation after their contact information and address of residence in Korea is verified. They are also required to install "Self-Diagnosis App" on their phones to check if they show any COVID-19 symptoms on a daily basis for 14 days. In addition, the list of incoming travelers is provided to each local government(city or province) in an effort to strengthen the monitoring system.

• Symptomatic Passengers

- All entrants from abroad (both Korean nationals and foreigners) will go through diagnostic tests **at the airport** if they have fever or respiratory symptom identified at entry screening.
- Travelers who test positive for COVID-19 will be transferred to a hospital or residential treatment Center. Korean nationals or long-term foreign nationals

☞ Border screening procedures for inbound travelers (from 00:00, Nov. 23)



IAEA Safeguards Activities in 2020

Facility	IAEA Inspection					CA					Total
	KHNP	KAERI	KNF	Etc	Total	KHNP	KAERI	KNF	Etc	Total	
Times	63	16	14	2	95	1	5	1	2	9	104

- Including UI and PIV, etc. for which a total of 289 PDIs
- Conducted 9 Complementary Accesses (CAs)

National Inspections in 2020

Facility	IAEA Inspection				Total
	KHNP	KAERI	KORAD	Small-quantity Company	
Times	21	5	2	8	36

- Performed total 36 national inspections by KINAC

- › KDCA guidelines set as a top priority to protect personnel in the nuclear facilities
- › Securing alternative personnel considering the urgency and importance of each task
- › Establishing an IT infrastructure and cyber security system as telecommuting expands
- › Establish an internal information sharing channel to resolve the lack of communication due to untact situation
- › Preparation and disclosure of regulatory guidelines for the predictable regulation in pandemic situation



- Human safety is the top priority, and we need to prepare efficient measures to maintain effectiveness accordingly

What we have done

- Support the IAEA activities to accomplish its goal
- In case of national inspection and mandatory trainings, we finished it in a flexible manner considering alert level

Future work

- Need efforts to establish countermeasures against hacking problems as telecommuting expands (both for regulators and facility operators)
- Need to prepare regulatory guidelines in response to pandemic situation



Thank you